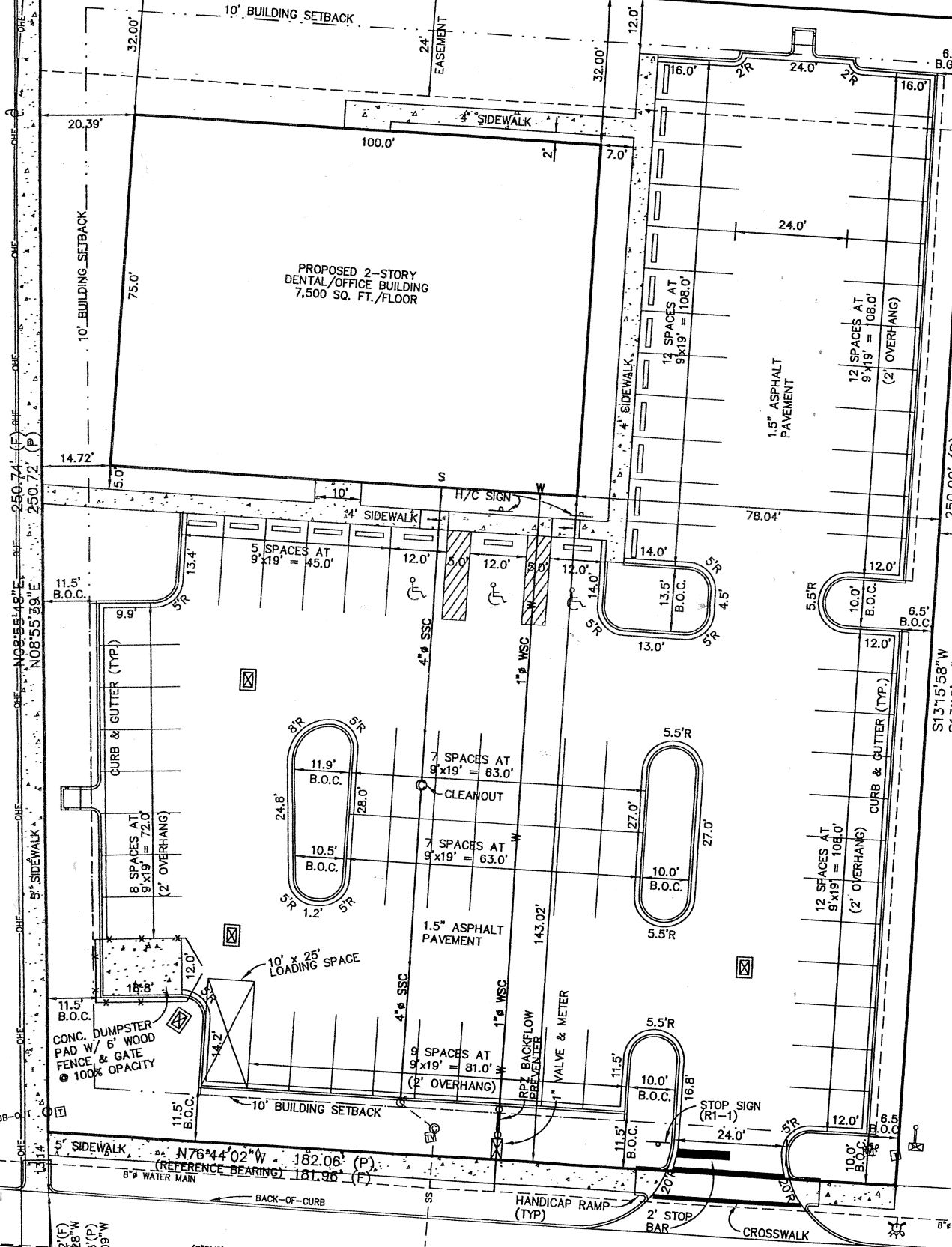


GUY POLE OHE OHE OHE OHE OHE OHE OHE OHE

S76°44'04"E 200.92' (F)
S76°44'02"E 201.02' (P)



PROPOSED 2-STORY
DENTAL/OFFICE BUILDING
7,500 SQ. FT./FLOOR

GULFSTARR DRIVE
(PRIVATE DRIVE)
50' R/W

C = 37.12' (F)
CB = S06°07'28"W
C = 37.15' (P)
CB = S06°05'09"W

ZONED: RT